

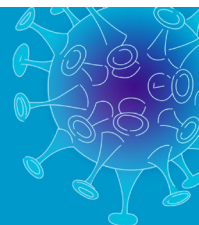


COVID-19 - RETURN TO CHAMPIONSHIP PROTOCOLS
TEMPERATURE SCREENING
USE OF INFRARED THERMOMETERS

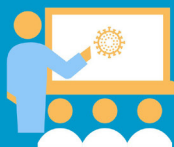
Confédération Européenne de Pétanque
Boulodrome national FLBP, 184, chemin Rouge, L-4480 Belvaux, LUXEMBOURG

www.cep-petanque.com

Be **KIND** to address fear during #coronavirus



Show empathy with those affected



Learn about the disease to assess the risks



Adopt practical measures to stay safe

Learn more to Be **READY** for #COVID19:
www.who.int/COVID-19



UNITED NATIONS



World Health
Organization

Confédération Européenne de Pétanque

TEMPERATURE SCREENING

USE OF INFRARED THERMOMETERS

Note: this protocol is subject to change, without notice. last updated - 20 March 2021

The temperature of all participants must be checked daily prior to entry to the site. The use of a non-contact infrared thermometer (NCITs) is recommended for this purpose. This document describes the protocol for temperature screening at CEP Championships.

Benefits of using NCITs

- The risk of transmission of COVID-19 is reduced by allowing some separation between the participant and the NCIT user;
- They are simple to use;
- NCITs are easy to disinfect;
- Results are available quickly and easy to interpret;
- Repeated measures can be taken quickly.

Limitations of NCITs

- The temperature reading may be affected by the use of a NCIT.
- The use of NCITs necessarily brings the user and the person being screened into close proximity, which presents some risk of transmission. Incorrect use can increase that risk.

Temperature measurement

Note: the instructions below are generic. The manufacturer's instructions should be followed.

Preparation

- Temperatures should be measured in a sheltered area, out of direct sunlight.
- Ensure that the ambient conditions are within the acceptable range for the NCIT.
- Store the NCIT in the measurement location for sufficient time for it to adjust to the environment.
- Clean the NCIT between periods of use, following manufacturer's instructions.
- Ensure that the NCIT has a direct view of the forehead, with no blockage.
- Advise participants to not wear items that could increase the temperature of the forehead (e.g. headbands, hoods).
- Ensure that the participant does not artificially reduce the forehead temperature (e.g. using ice) before the measurement is taken.
- The same brand/model of NCIT should be used at all entrance points.

Collection

- A suitably-trained championship employee must collect temperatures. (Local law may require a medical professional for this purpose)
- Hold the NCIT perpendicular to the forehead, **not** from the side.
- Ensure the correct distance between the NCIT and the forehead (according to the manufacturer).
- Hold the NCIT at arm's length.
- Do not touch the NCIT sensor.
- Record the result.

Acceptable readings

Participants with a temperature of under 38°C (100.4°F) should be permitted access to the site.

Action of failure

Any participant with a temperature of 38°C (100.4°F) or above should be subject to a second measurement, under the following conditions:

- After a delay of at least 15 minutes.
- After resting between measurements.
- After the participant has been out of direct sunlight.
- In a separate location (where possible).

If the second measurement is also 38°C or above, then the participant concerned must not be permitted access to the site. If that person is already on-site, then they should be evacuated to their accommodation in accordance with the CEP Management of Covid-19 Cases at the Championship Venue Protocol (which may still be followed if the accommodation is within the perimeter of the site).

If the second measurement is below 38°C, then the participant may be admitted to the site. If it is 38°C or above then please consult the Championship Doctor and not admit.



Notes:



CONFÉDÉRATION EUROPÉENNE DE PÉTANQUE
Boulodrome national FLBP, 184, chemin Rouge, L-4480 Belvaux, LUXEMBOURG

Copyright © 2020 Confédération Européenne de Pétanque
All rights reserved.